

oakheart

£750,000

Prices From
Alexander Mews, Shenfield



- Zero Bills via Octopus Energy
- Car charging points
- Kreider Kitchens
- Bosch Appliances
- Quartz Worktops
- Scudo Sanitaryware
- Fully tiled bathrooms
- LVT Flooring
- Luxury Carpets
- Fully turfed Gardens

Alexander Mews is an exclusive collection of just eight beautifully designed three-bedroom houses and one exceptional three-bedroom detached bungalow, offering contemporary living in a highly sought-after location, with prices from £750,000.

Situated just 0.5 miles from Shenfield Station, residents benefit from excellent connections via the Elizabeth Line and Greater Anglia services, providing fast and convenient access to London and beyond.

Each home is finished to an outstanding specification, combining stylish design with premium quality throughout. Contemporary Kreider kitchens are complemented by Bosch integrated appliances and elegant quartz worktops, while luxurious bathrooms feature Scudo sanitaryware and are fully tiled for a sophisticated finish.

Designed with comfort and practicality in mind, every home includes LVT flooring to key living areas, luxury carpets to bedrooms, electric vehicle charging points, and fully turfed private gardens, ready to enjoy from day one.

For added peace of mind and exceptional value, a selection of homes benefits from Zero Bills through Octopus Energy, helping to reduce household energy costs while supporting a more sustainable way of living.

Alexander Mews offers the perfect blend of luxury, efficiency and connectivity, making it an outstanding choice for modern family living.

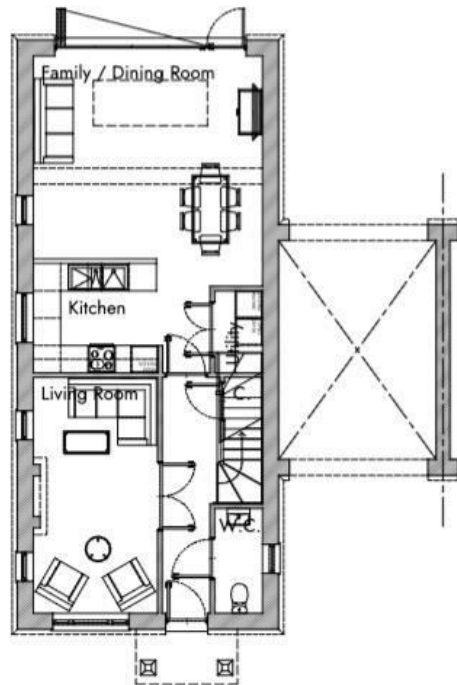
The floorplan for Plots 1 and 3 are shown as an example of the layout.



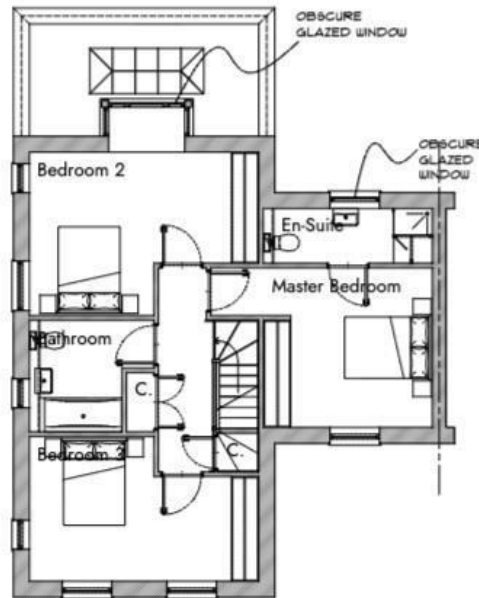
Energy Efficiency Rating

	Current	Potential
<i>Very energy efficient - lower running costs</i>		
(92 plus) A	92	92
(81-91) B		
(69-80) C		
(55-68) D		
(39-54) E		
(21-38) F		
(1-20) G		
<i>Not energy efficient - higher running costs</i>		

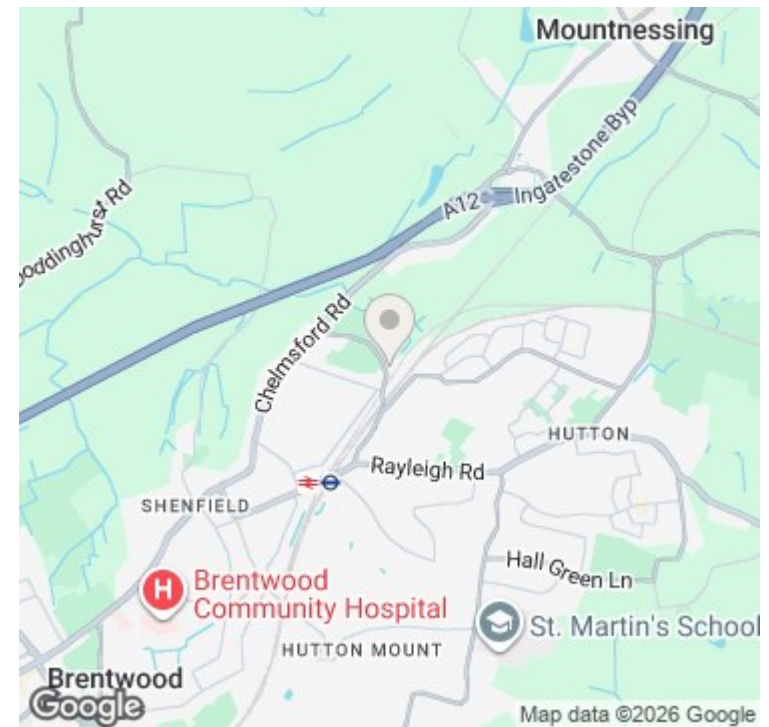
England & Wales
EU Directive 2002/91/EC



Ground Floor Plan
Plot 3 Handed



First Floor Plan



oakheart

Oakheart Chelmsford

01245 800181

chelmsford@oakheart.co.uk

20 Victoria Road, Chelmsford, Essex, CM1 1PA